

EXECUTIVE MEMBER REPORT TO COUNCIL

EXECUTIVE MEMBER: Executive Member for Adult Social Care and Public Health, Public Protection and Digital Inclusion

DATE OF MEETING: 18 January 2023

The purpose of this report is to provide an update to members on areas of activity within my portfolio including performance against strategic priorities.

STRATEGIC PRIORITIES

Strategic Priority: Support for Hospital Discharge over the Christmas and New Year Period

Update: Excellent work went on over the Christmas and New Year holiday period to ensure that Adult Social Care was able to facilitate discharge at a time of acute pressure for James Cook University Hospital and North-East Ambulance Service. Staff have continued to work on all but Christmas Day and New Year's Day and have done a very effective job in minimising the number of delays to discharge. We should be proud of the work undertaken by our Hospital Social Work staff; our Trusted Assessors; our Brokers and all the other staff members who have been involved in whatever capacity.

Unlike some other Local Authority areas the independent providers that we contract with for domiciliary care provision have managed to maintain sufficient capacity within the market to avoid the long waiting lists for services seen in some areas. This has been a major success for us and speaks to the high standard of the domiciliary care providers in our area (which is also true of our residential care providers) and has also relied on the excellent service provided by our own Contracts and Commissioning Team. This work continues as pressure on the NHS is sustained, or growing, through the combination of winter, COVID, flu and industrial action.

Strategic Priority: Strategic Work on Discharge

The Director of Adult Social Care and other senior managers in the directorate have been involved in almost daily strategic calls with senior staff from the Integrated Care System, acute hospitals, North-East Ambulance Service and other Local Authorities throughout the holiday period to ensure there is strategic co-ordination and direction for the operational work on flow out of hospital. Close links between the Directors of Adult Social Services across the North-East region, under the auspices of the Association of Directors of Adult Social Services, have ensured that we have been

able to share learning across the region and this has been reflected in the additional schemes around hospital discharge that we are implementing in response to central government's additional short-term hospital discharge funding. For Middlesbrough these measures include, for instance, additional investment in Tees Community Equipment Service to support the provision of Occupational Therapy and Community Nursing equipment on the day that it is requested and the block-booking of residential care beds for specific groups of service users, such as patients receiving end of life care, to ensure availability at the point of need. Close working between the Local Authority at Director level and the Integrated Care System Director for "place" continues on an almost daily basis.

DIRECTORATE PRIORITIES

Directorate Priority: Preparations for the commencement of CQC Inspections of Adult Social Care in Local Authorities and ICSs

Update: April 2023 sees the commencement of inspection by the Care Quality Commission of how well Local Authorities (and Integrated Care Systems) deliver their duties under the Care Act 2014. Extensive work is now under way within our Adult Social Care directorate in, co-ordination with the North-East branch of the Association of Directors of Adult Social Services, to ensure that the service area is well prepared and that the wider Local Authority understands the process. The first round of inspection of all North-East authorities will commence in April 2023 and is expected to take two years to complete – when we will be inspected is as yet unknown. A round of briefings on the inspection framework for officers and Elected Members will begin in the forthcoming weeks and further information on the CQC process will be shared as it emerges.

Directorate Priority: Homelessness

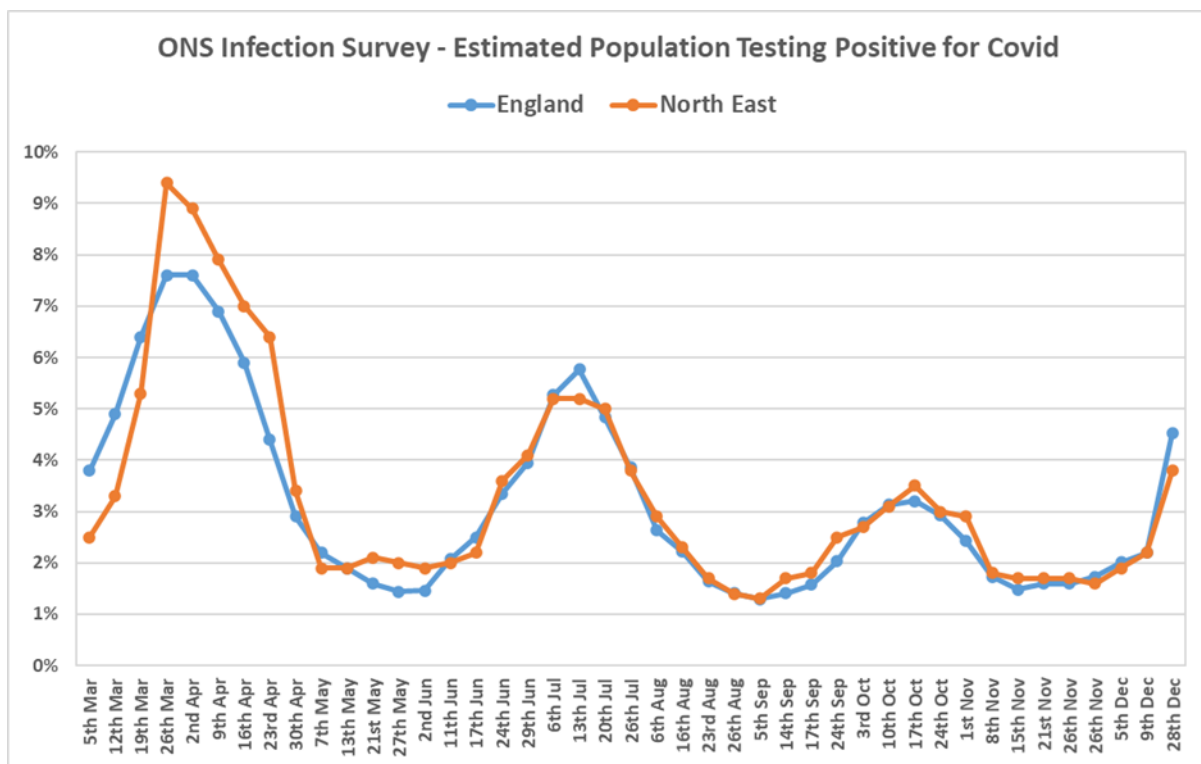
The Department for Levelling Up, Housing and Communities recently announced undertook a series of roadshows announcing their Single Homelessness Accommodation Programme (SHAP) which was announced in September 2022 and is intended to increase the supply of high quality accommodation and support to address gap in homelessness pathway provision. SHAP will be focussed on areas with high levels of need, specifically where there are adults with a history of rough sleeping who experience multiple deprivation, and Middlesbrough has been identified as such an area.

We are required therefore to undertake a "gap analysis", working with other Council directorates and with partners, to identify areas for development and potential solutions; we intend to work towards submitting a bid to the scheme in advance of the final submission date on 22 February 2023. More information will be shared as it becomes available.

Covid Current Picture

- ONS infection survey - (w/e 28th Dec) shows weekly infection rate of 4.5% (1 in 20 people) in England, an increase from previous figure of 2.2%. The North-East increased from 2.2% to 3.8%. South-West was the highest at 5.4%. Trends shown in the graph below.

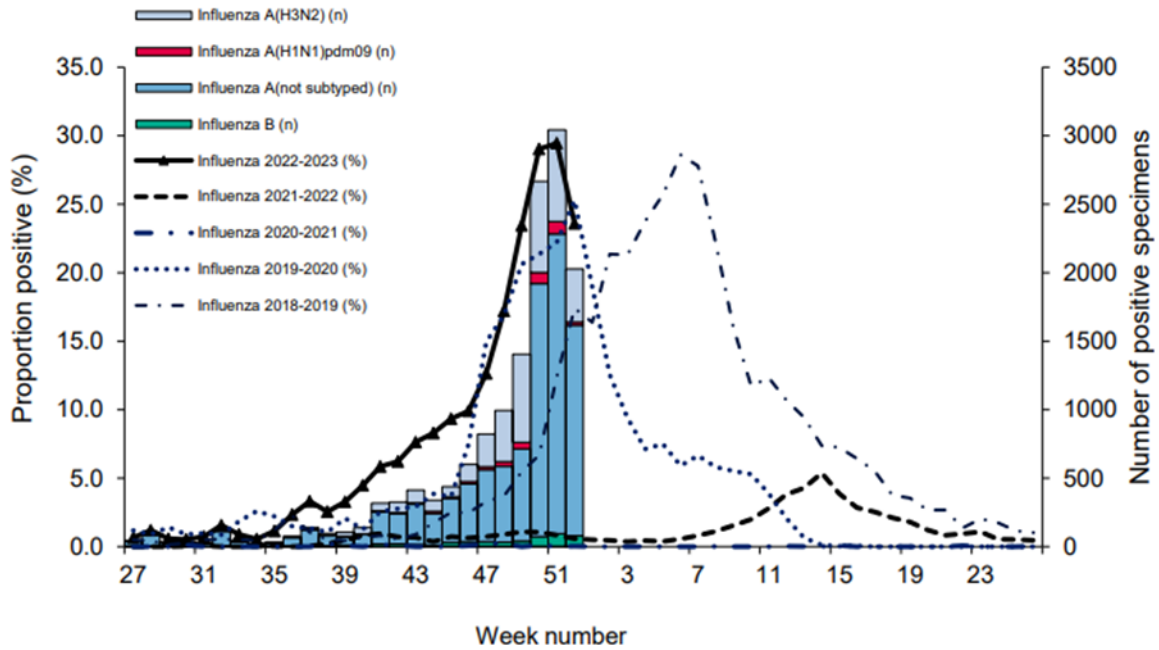
- Variants – Since the end of June 2022, most COVID-19 infections in the UK have been Omicron variant BA.5. One of these BA.5 sub-lineages, BQ.1, has been increasing in recent months. In the week ending 18 December 2022, BQ.1 comprised 56.2%, and other BA.5 variants comprised 12.3%. The variant BA.2.75 and its sub-lineages (that includes XBB which you might have seen in the news) comprised 29.7%.
- Covid Cases - Middlesbrough's rate was 51 per 100,000 in 7 days to 2nd Jan (up 13% from 45 previous week). This was 93rd highest nationally. Redcar & Cleveland's rate was 51 per 100,000 (up 40% from 36 previous week) and ranked 92nd highest. The highest rate was in Plymouth at 133 per 100,000. Nationally there has been a 15% decrease in positive cases compared to previous week.
- Hospital Patients - Latest data from South Tees Trust (6th Jan) shows there are 55 Covid positive patients at South Tees Trust, an increase compared to 45 in the previous week. Currently 1 in critical care compared to 2 in the previous week.
- Deaths – There has been 0 Covid deaths in Middlesbrough for the week ending 23rd Dec with a total of 2 Covid deaths in the previous 4 weeks. There has been 0 Covid deaths in Redcar & Cleveland with a total of 0 Covid deaths in the previous 4 weeks.
- Vaccinations – Of those eligible for the seasonal booster the uptake rate for Middlesbrough as of 4th Jan was 57.7% and for Redcar & Cleveland was 64.7% compared to rate of 63.5% across Cumbria & North-East. In Middlesbrough, Holgate PCN was highest with 62.8% and Greater Middlesbrough PCN lowest with 55.1%. In Redcar & Cleveland, East Cleveland PCN was highest with 67.7% and Eston PCN lowest with 59.2%.



Flu Current Picture (some data delayed due to Christmas and New Year)

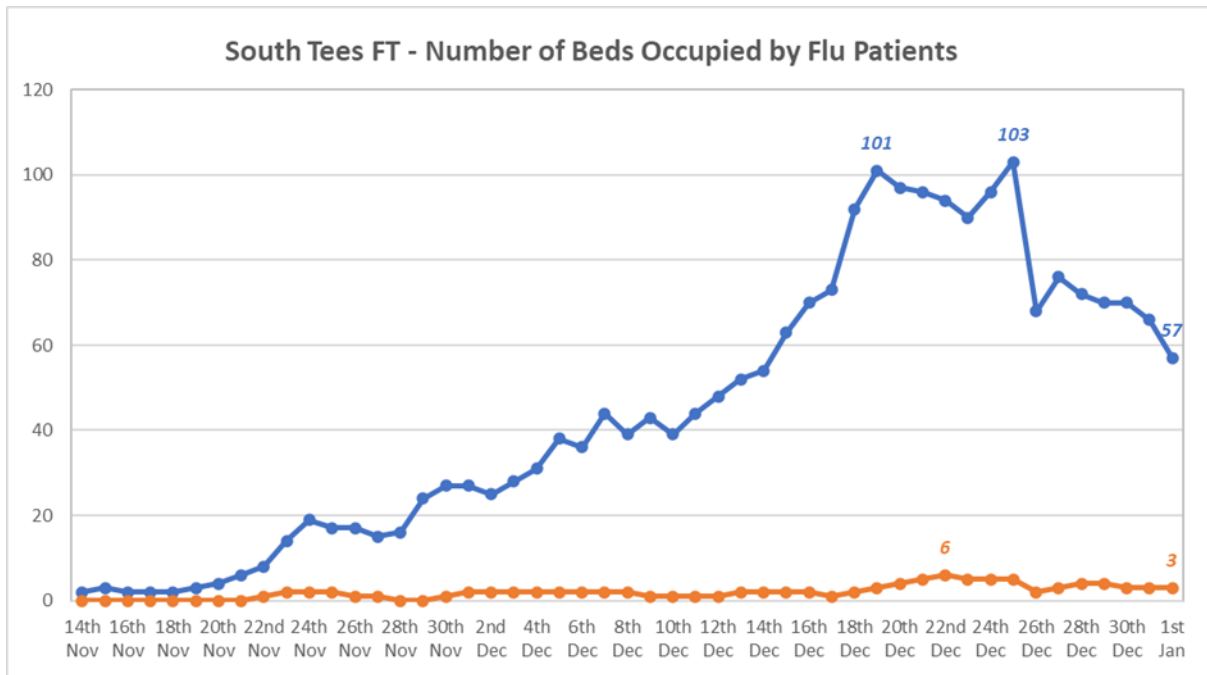
National data shows Influenza swab positivity has remained high. In week 52, influenza positivity decreased to 23.6% compared with 29.4% in week 51; with highest positivity seen in the 15 to 44 years age group at 31.0%. The number of positive specimens for 2022/23 increased above the 2019-20 season but is now at a similar level.

Figure 10: Respiratory DataMart samples positive for influenza and weekly positivity (%) for influenza, England



Through primary care surveillance, the influenza-like-illness consultations indicator increased in week 51, before decreasing in week 52 and remains at medium activity level. Influenza hospital admissions increased in week 51 to very high. The week 50 admissions rate was retrospectively updated to high activity level. The rate decreased in week 52 to the medium activity range. Admissions data is provisional. Influenza admissions were highest in the 85 years and over and 75 to 84 year olds' age groups. Influenza ICU admissions increased in week 51, before decreasing slightly in week 52, remaining within the medium intensity range

Locally the number of flu patients in South Tees Foundation Trust hospitals in general and acute beds peaked on 25th December 2022 with 103 patients, before reducing to 57 on 1st January 2023. Number in critical care beds peaked at 6 patients on 22nd December 2022 and now at 3 patients as of 1st January 2023.



NAME: Councillor David Coupe
 DATE: 10 January 2023